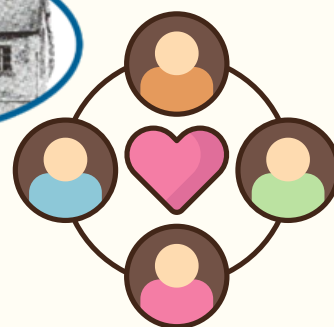


SEND in PSHE



Teachers set high expectations for every pupil



H&A

QUALITY FIRST TEACHING IN PSHE

- language is clear, unambiguous and accessible
- key words, meanings and symbols are highlighted, explained and written up
- instructions are given clearly and reinforced visually
- wording of questions is planned carefully
- questions are prepared in different styles and levels
- alternative communication modes are used where necessary
- where appropriate children are allowed time to discuss answers in pairs
- time to think, time to explain and respect responses to questions
- additional adults used effectively and appropriately to support pupils

SEND STRATEGIES

TEACHERS' COMMUNICATION

- recognise that 'concept's and language in PSHE and citizenship, because of their abstract nature, can create barriers for pupils', and older pupils may need support with vocabulary specific to citizenship topics, eg 'community', 'identity', 'sustainability' or 'democracy'
- plan to teach new vocabulary explicitly at the start of a new topic and ensure that pre-tutoring on PSHE and citizenship vocabulary is available where needed
- help pupils find out more about their world through games, videos and animations. The Directgovkids website covers a range of issues and allows users to make changes for greater accessibility: www.directgovkids.co.uk

SEND STRATEGIES

PUPILS' COMMUNICATION

- use a magic shell, ball or soft toy. The person holding the object is the only person allowed to speak. The object is then passed to the next pupil, who then speaks. This gives pupils time to think and respond, and is particularly helpful in conducting debates on issues of concern to pupils. It encourages turn-taking and listening, and helps to increase participation and build self-confidence

SEND STRATEGIES

GENERAL

- working walls - accessible, clear, adding new knowledge and vocabulary
- story maps - bring ideas and tricky concepts to life by drawing them out together
- using photographs and audio can help children with learning about events - makes things less abstract and more real
- writing slopes can help children with handwriting difficulties
- break down tasks into smaller chunks or disclose one task at a time can ease cognitive load

our curriculum is accessible to all children



our aim is to enable all children to enjoy success in all areas of the curriculum